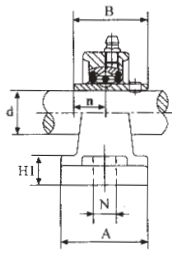
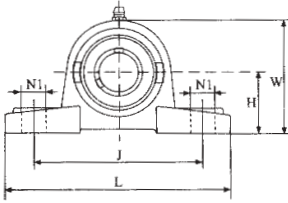
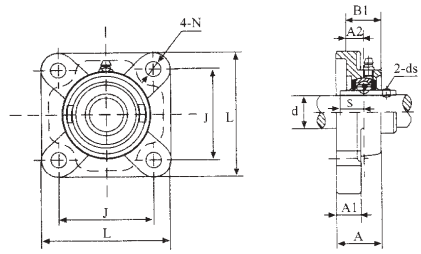


Pillow Blocks Cast Housing UCP 200



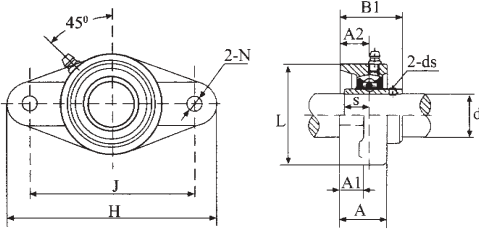
Bearing Number	Shaft Dia. d		Dimensions (mm)											Bolt Size	Bearing Number	Housing No.	Weight kg		
	in	mm	H	L	J	A	N	N1	H1	W	n	B	d _s						
UCP 201 201-8 202-9	1/2	12															UC 201 201-8 202-9		
202-10 203	5/8	15	30.2	125	96	32	12	16	13	57	11.5	27.4	1/4-28 UNF M5 x 0.80	M10	UC 203 202-10 203	P 203	0.60		
203-11 204	3/4	17														UC 204-12 202	P 204	0.70	
UCP 204-12 204	3/4	20	33.3	127	96	37	13	16	14	63.8	12.7	31	1/4-28 UNF M6 x 1	M10	UC 204-12 202	P 204	0.70		
UCP 205-14 205-15 205	7/8	25	36.5	140	105	38	13	19	15	69.5	14.3	34.1	1/4-28 UNF M6 x 1	M10	UC 205-14 202-15 205	P 205	0.75		
205-16 UCP 206-18 206	1	30	42.9	160	121	44	14	19	16	82	15.9	38.1	5/16-24 UNF M8 x 1	M12	UC 206-16 206 206-19 206-20	P 206	1.30		
206-19 206-20 UCP 207-20 207-21	1-1/8	35	47.6	167	126	48	15	19	17	92	17.5	42.9	5/16-24 UNF M8 x 1	M12	UC 207-14 202-15 207	P 207	1.60		
207-22 207 207-23 UCP 208-24 208-25 208	1-3/8	40	49.2	180	136	52	15	21	18	98	19	49.2	5/16-24 UNF M8 x 1	M12	UC 208-24 208.25 208	P 208	1.9		
209-26 209-27 209-28 209	1-7/8	45	54	190	146	54	15	21	20	105.5	19	49.2	5/16-24 UNF M8 x 1	M12	UC 209-26 209-27 209-28	P 209	2.3		
UCP 210-30 210-31 210 210-32	1-7/8	50	57.2	204	159	57	19	22	21	113	19	51.6	5/16-24 UNF M8 x 1	M16	UC 210-30 210-31 210 210-32	P 210	2.6		
211-32 211-34 211 211-35	2	55	63.5	217	172	60	19	22	22	125	22.2	55.6	3/8-24 UNF M10 x 1.25	M16	UC 211-32 211-34 211 211-35	P 211	3.30		
UCP 212-36 212-37 212 212-38 212-39	2-1/4	60	69.9	238	186	66	19	25	24	137	25.4	65.1	3/8-24 UNF	M16	UC 212-36 212.37 212 212-38 212-39	P 212	4.60		
UCP 213-40 213 213-43	2-1/2	65	76.2	262	203	70	23	29	26	148.2	25.4	65.1	3/8-24 UNF M10 x 1.25	M20	UC 213-40 213 213-43	P 213	5.9		
UCP 214-44 214	2-3/4	70	79.4	266	210	72	23	29	27	155	30.2	74.6	3/8-24 UNF M10 x 1.25	M20	UC 214-44 214	P 214	6.60		
UCP 215-44 215-47 215 215-48	2-3/4	75	82.6	275	217	74	25	29	28	163	33.3	77.8	3/8-24 UNF M10 x 1.25	M20	UC 215-44 215-47 215 215-48	P 215	7.30		
UCP 216 216-52	3	80	292	232	78	25	29	30	175	33.3	82.6			M20	UC 216 216-52	P 216	9.00		
216-52 UCP 217-52 217	3-1/4	85	95.2	310	247	83	25	30	32	186	34.1	85.7		M20	UC 217-52 217	P 217	10.8		
UCP 218-56 218	3-1/2	90	101.6	327	262	88	27	32	33	200	39.7	96		M20	UC 218-56 218	P 218	13		

Square Flange Cast Housing UCF 200



Bearing Number	Shaft Dia. d		Dimensions (mm)										Bolt Size	Bearing Number	Housing No.	Weight kg	
	in	mm	L	J	A2	A1	A	B1	N	S	d _s						
UCF 201		12													UC 201		
201-8	1/2														201-8		
202-9	9/16	15												202-9	F 203	0.59	
202														202			
202-10	5/8	17	76	54	15	11	25.5	30.9	11.5	11.5		1/4-28 UNF	M10	202-10			
203														203			
203-11	11/16													203-11			
UCF 204-12	3/4	20												UC 204-12			
204			86	64	15	11	25.5	33.3	11.5	12.7		1/4-28 UNF	M10	204	F 204	0.61	
UCF 205-14	7/8													UC 205-14			
205-15	15/16	25	95	70	16	13	27	35.7	11.5	14.3		1/4-28 UNF	M10	205-15	F 205	0.80	
205														205			
205-16	1													205-16			
UCF 206-18	1-1/8													UC 206-18			
206		30	108	83	18	13	31	40.2	11.5	15.9		1/4-28 UNF	M10	206	F 206	1.0	
206-19	1-3/16													206-19			
206-20	1-1/4													206-20			
UCF 207-20	1-3/4													UC 207-20			
207-21	1-5/8													207-21	F 207	1.8	
207-22	1-3/8	35	117	92	19	15	34	44.4	14	17.5		5/16-24 UNF	M12	207-22			
207														207			
207-23	1-7/16													207-23			
UCF 208-24	1-1/2													UC 208-24			
208-25	1-9/16	40	130	102	21	15	36	51.2	14	19		5/16-24 UNF	M12	208-25	F 208	1.8	
208														208			
UCF 209-26	1-5/8													UC 209-26			
209-27	1-11/16		137	105	22	16	38	52.2	16	19		5/16-24 UNF	M14	209-27	P 209	2.2	
209-28	1-3/4													209-28			
209		45												209			
UCF 210-30	1-7/8													UC 210-30			
210-31	1-15/16		143	111	22	16	40	54.6	18	19		3/8-24 UNF	M16	210-31	F 210	2.4	
210		50												210			
210-32	2													210-32			
UCF 211-30	2													UC 211-30			
211-34	2-1/8		162	130	25	18	43	58.4	18	22.2		3/8-24 UNF	M16	211-34	F 212	4.2	
211		55												211			
211-35	2-3/16													211-35			
UCF 212-36	2-1/4													UC 212-36			
212-37	2-5/16	60	175	143	29	18	48	68.7	18	25.4		3/8-24 UNF	M16	212-37	F 212	4.2	
212														212			
212-38	2-3/8													212-38			
212-39	2-7/16													212-39			
UCF 213-40	2-1/2													UC 213-40			
213		65	187	149	30	20	50	69.7	19	25.4		3/8-24 UNF	M16	213	F 213	5.3	
213-43	2-11/16													213-43			
UCF 214-44	2-3/4													UC 214-44			
214		70	193	152	31	24	54	75.4	19	30.2		7/16-20 UNF	M16	214	F 214	5.9	
UCF 215-44	2-3/4													UC 215-44			
215-47	2-11/16	75	200	159	34	24	56	78.5	23	33.3		7/16-20 UNF	M16	215-47	F 215	6.3	
215														215			
215-48	3													215-48			
UCF 216		80												UC 216			
216-52	3-1/4		208	165	34	24	58	83.3	23	33.3		7/16-20 UNF	M20	216-52	F 216	7.3	
UCF 217-52	3-1/4													UC 217-52			
217		85	220	175	36	26	63	87.6	23	34.1		7/16-20 UNF	M20	217	F 217	8.9	
UCF 218-56	3-1/2													UC 218-56			
218		90	235	187	40	26	68	96.3	23	39.7		7/16-20 UNF	M20	218	F 218	11.6	

UCFL200

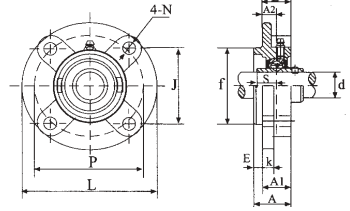


Over Flange Cast Housing UCFL 200

Bearing Number	Shaft Dia. d		Dimensions (mm)											Bolt Size	Bearing Number	Housing No.	Weight kg
	in	mm	H	L	J	A2	A1	A	B1	N	S	d _s					
UCFL 201 201-8 202-9 202 202-10 203-11	1/2 9/16 5/8 203 11/16	12 15 17	99	76.5	57	15	11	25.5	30.9	11.5	11.5	1/4-28 UNF	M10 M5 x 0.8	UC 201 201-8 202-9 202 202-10 203-11	FL203 203	0.45	
UCFL 204-12 204	3/4	20	113	90	60	15	11	25.5	33.3	11.5	12.7	1/4-28 UNF M6 x 1	M10	UC 204-12 204	FL204	0.5	
UCFL 205-14 205-15 205 205-16	7/8 15/16 1	25	130	99	68	16	13	27	35.8	11.5	14.3	1/4-28 UNF M6 x 1	M10	UC 205-14 205-15 205 205-16	FL205	0.6	
UCFL 206-18 206 206-19 206-20	1-1/8 1-9/16 1-1/4	30	148	117	80	18	13	31	40.2	11.5	15.9	1/4-28 UNF M6 x 1	M10	UC 206-18 206 206-19 206-20	FL206	0.9	
UCFL 207-20 207-21 207-22 207 207-23	1-1/4 1-5/8 1--3/8 1-7/16	35	161	130	90	19	14	34	44.4	14	17.5	5/16-24 UNF M8 x 1	M12	UC 207-20 207-21 207-22 207 207-23	FL207	1.2	
UCFL 208-24 208-25 208	1-1/2 1-9/16	40	175	144	100	21	14	36	51.2	14	19	5/16-24 UNF M8 x 1	M12	UC 208-24 208-25 208	FL208	1.6	
UCFL 209-26 209-27 209-28 209	1-5/8 1-3/4 1-3/4	45	188	148	108	22	16	38	52.2	18	19	5/16-24 UNF M8 x 1	M16	UC 209-26 209-27 209-28 209	FL 209	1.9	
UCFL 210-30 210-31 210 210-32	1-7/8 1-15/16 2	50	197	157	115	22	16	40	54.6	18	19	3/8-24 UNF M10 x 1.25	M16	UC 210-30 210-31 210 210-32	FL210	2.2	
UCFL 211-32 211-34 211	2 2-3/8 211-35 2-3/16	55	224	184	130	25	18	43	58.4	18	22.2	3/8-24 UNF M10 x 1.25	M16	UC 211-32 212-37 211	FL 211 211-35	3.1	
UCFL 212-36 212-37 212 212-38 212-39	2-1/4 2-9/16 2-3/8 2-7/16	60	250	202	140	29	18	48	68.7	18	25.4	3/8-24 UNF M10 x 1.25	M16	UC 212-36 212-37 212 212-38 212-39	FL212	4	
UCFL 213-40 213 213-43	2-1/2 2-11/16	65	258	210	155	30	22	50	69.7	23	25.4	7/16-20 UNF M12 x 1.25	M20	UC 213-40 213 213-43	FL213	5	
UCFL 214-44 214	2-3/4	70	265	216	160	31	22	54	75.4	23	30.2	7/16-20 UNF M12 x 1.25	M20	UC 214-44 214	FL214	5.6	
UCFL 215-44 215-47 215 215-48	2-3/4 2-15/16 3-1/4	75	272	225	165	34	22	56	78.5	23	33.3	7/16-20 UNF M12 x 1.25	M20	UC 215-44 215-47 215 215-48	FL215	6.2	
UCFL 216 216-52	3-1/4	80	290	233	180	34	22	58	83.3	25	33.3	7/16-20 UNF M12 x 1.25	M22	UC 216 216-52	FL216	7.8	
UCFL 217-52 217	3-1/4	85	305	248	190	36	24	63	87.6	25	34.1	7/16-20 UNF M12 x 1.25	M22	UC 217-52 217	FL217	9.8	
UCFL 218-56 218	3-1/2	90	320	265	205	40	24	68	96.3	25	39.7	7/16-20 UNF M12 x 1.25	M22	UC 218-56 218	FL218	12.4	

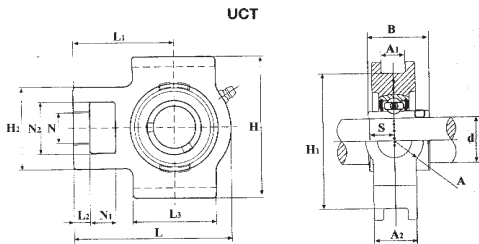
Circular Flange Cast Housing UCFC 200

UCFC200



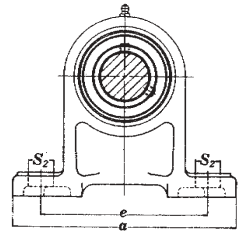
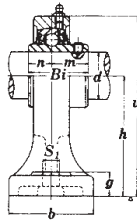
Bearing Number	Shaft Dia. d		Dimensions (mm)													Bolt Size	Bearing Number	Housing No.	Weight kg	
	in	mm	L	P	A2	A1	A	j	k	f	J	N	S	B						
UCFC 201 201-8 202-9 202 202-10 203 203-11	1/2 9/16 5/8 11/16	12 15 17																UC 201 201-8 202-9 202-10 203 203-11	FC203	0.76
UCFC 204-12 204	3/4	20	100	78	10	20.5	25.5	5	6	62	55.1	11.5	12.7	28.3	M10		UC 204-12 204	FC 205	0.76	
UCFC 205-14 205-15 205 205-16	7/8 15/16 1 1	25	115	90	10	21	27	6	7	70	63.6	12	14.3	29.7	M10		UC 205-14 202-15 205 205-16	FC 205	0.96	
UCFC 206-18 206 206-19 206-20	1-1/8 1-3/16 1-1/4 1-1/4	30	125	100	10	23	31	8	8	80	70.7	12	15.9	32.2	M10		UC 206-18 206 206-19 206-20	FC 206	1.3	
UCFC 207-20 207-21 207-22 207 207-23	1-1/4 1-5/16 1-3/8 1-7/16	35	135	110	11	26	34	8	9	90	77.8	14	17.5	36.4	M12		UC 207-20 207-21 207-22 207 207-23	FC 207	1.7	
UCFC 208-24 208-25 208	1-1/2 1-9/16 1-1/2	40	145	120	11	26	36	10	9	100	84.8	14	19	41.2	M12		UC 208-24 208-25 208	FC 208	2.0	
UCFC 209-26 209-27 209-28 209	1-5/8 1-11/16 1-3/4 1-3/4	45	160	132	10	26	38	12	10	105	93.3	16	19	40.2	M14		UC 209-26 209-27 209-28 209	FC 209	2.7	
UCFC 210-30 210-31 210 210-32	1-7/8 1-15/16 2 2	50	165	138	10	28	40	12	14	110	97.6	16	19	42.6	M14		UC 210-30 210-31 210 210-32	FC 210	2.9	
UCFC 211-32 211-34 211 211-35	2 2-1/8 2-3/16 2-3/16	55	185	150	13	30	43	12	15	125	106.1	19	22.2	46.4	M16		UC 211-32 211-34 211 211-35	FC 211	4.2	
UCFC 212-36 212-37 212 212-38 212-39	2-1/4 2-5/16 2-3/8 2-7/16	60	195	160	17	36	48	12	15	135	113.1	19	25.4	56.7	M16		UC 212-36 212-37 212 212-38 212-39	FC 212	5.0	
UCFC 213-40 213 213-43	2-1/2 2-11/16 2-3/4	65	205	170	16	36	50	14	15	145	120.2	19	25.4	55.7	M16		UC 213-40 213 213-43	FC 213	5.7	
UCFC 214-44 214	2-3/4 2-3/4	70	215	177	17	40	54	14	18	150	125.1	19	30.2	61.4	M16		UC 214-44 214	FC 214	6.8	
UCFC 215-44 215-47 215 215-48	2-3/4 2-11/16 3 3	75	220	184	18	40	56	16	18	160	130.1	19	33.3	62.5	M16		UC 215-44 215-47 215 215-48	FC 215	7.2	
UCFC 216 216-52	3-1/4 3-1/4	80	240	200	18	42	58	16	18	170	141.4	23	33.3	67.3	M20		UC 216 216-52	FC 216	8.7	
UCFC 217-52 217	3-1/4 3-1/4	85	250	208	18	42	63	18	20	180	147.1	23	34.1	69.6	M20		UC 217-52 217	FC 217	10.3	
UCFC 218-56 218	3-1/2 3-1/2	90	265	220	22	50	68	18	20	190	155.5	23	39.7	78.3	M20		UC 218-56 218	FC 218	13.5	

Take-up Units Cast Housing UCT 200

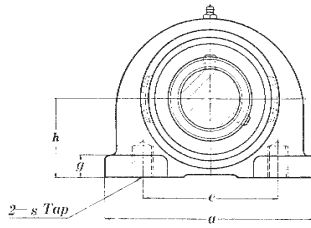
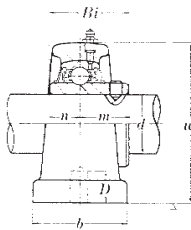


Bearing Number	Shaft Dia. d		Dimensions (mm)															Bearing Number	Housing No.	Weight kg
	in	mm	N1	L2	H2	H2	N	L3	A1	H1	H	L	A	A ₂	L ₁	B	S			
UCT 201 202-10 203 203-11	5/8	15 17	16	10	51	32	19	51	12	76	89	88	32	21	61	27.4	115	UC 202 202-10 203 203-11	T 202 T 203	0.70
UCT 204-12 204	3/4	20	16	10	51	32	19	51	12	76	89	94	32	21	61	31	12.7	UC 204-12 204	T 204	0.79
UCT 205-14 205-15 205 205-16	7/8 15/16 1	25	16	10	51	32	19	51	12	76	89	97	32	24	62	34	14.3	UC 205-14 205-15 205	T 205	0.88
UCT 206-18 206 206-19	1-1/8 1-3/16	30	16	10	56	37	22	57	12	89	102	113	37	28	70	38.1	15.9	UC 206-18 206 206-19	T 206	1.3
UCT 207-20 207-21 207-22 207 207-23	1-1/4 1-5/16 1-3/8 1-7/16	35	16	13	64	37	22	64	12	89	102	129	37	30	78	42.9	17.5	UC 207-20 207-21 207-22 207 207-23	T 207	1.7
UCT 208-24 208-25 208	1-1/2 1-9/16	40	19	16	83	49	29	83	16	102	114	144	49	35	87	49.2	19	UC 208-24 208-25 208	T 209	2.5
UCT 209-26 209-27 209-28 209	1-5/8 1-11/16 1-3/4	45	19	16	83	49	29	83	16	102	114	144	49	35	87	49.2	19	UC 209-26 209-27 209-28	T 209	2.5
UCT 210-30 210-31 210 210-32	1-7/8 1-15/16 2	50	19	16	83	49	29	86	16	102	117	149	49	37	90	51.6	19	UC 210-30 210-31 210 210-32	T 210	2.6
UCT 211-32 211-34 211 211-35	2 2-1/8 2-3/16	55	25	19	102	64	35	95	22	130	146	171	64	38	106	55.6	22.2	UC 211-32 211-34 211 211-35	T 211	2.6
UCT 212-36 212 212-38 212-39	2-1/4 2-3/8 2-7/16	60	32	19	102	64	35	102	22	130	146	194	64	42	119	65.1	25.4	UC 212-36 212 212-38 212-39	T 212	4.9
UCT 213-40 213	2-1/2	65	32	21	111	70	41	121	26	151	167	224	70	44	137	65.1	25.4	UC 213-40 213	T 213	7.0
UCT 214-44 214	2-3/4	70	32	21	111	70	41	121	26	151	167	224	70	44	137	74.6	30.2	UC 214-44 214	T 214	7.1
UCT 215 215-48	3	75	32	21	111	70	41	121	26	151	167	232	70	48	140	77.8	33.3	UC 215 215-48	T 215	7.5
UCT 216		80	32	21	111	70	41	121	26	165	187	235	70	51	140	82.6	33.3	UC 216	T 216	8.2
UCT 217-52 217	3-1/4	85	38	29	124	73	48	157	30	173	198	260	73	54	162	85.7	34.1	UC 217-52 217	T 217	11.0

Pillow Blocks With Setscrews UCPH 200



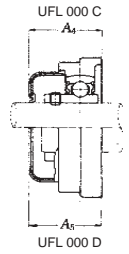
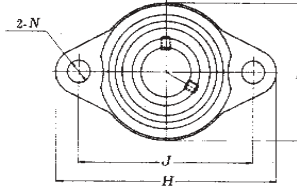
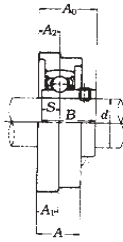
Bearing Number	Shaft Dia. d		Dimensions (mm)											Bolt Size		Bearing Number	Housing No.	Weight kg										
	in	mm	h	a	e	b	8 ₂	8 ₁	g	w	Bi	n	m	mm	in.													
UCPH 201 201-8 202	1/2	12																UC 201 201-8 202										
202-10		15	2 3/4	5	3 3/4	1 9/16	3/4	1/2	1 9/32	3 31/32	1.2205	0.5000	0.7205					UC 202-10	PH 204	0.96								
203 204-12 204	5/8	17	70	127	95	40	19	13	15	101	31.0	12.7	18.3	10	3/8			203 204-12 204										
UCPH 205-14 205-15	7/8	25	3 3/32	5 1/2	4 1/8	1 31/32	3/4	1/2	5/8	4 1/2	1.3386	0.5630	0.7756	3/8	10	19.7		UC 205-14 205-15	PH 205	1.2								
205 205-16	1 5/16		80	140	105	50	19	13	16	114	34.0	14.3	19.7															
UCPH 206-18 206	1 1/8	30	3 15/64	6 1/2	4 3/4	1 31/32	13/16	21/32	23/32	5 1/8	1.5000	0.6260	0.8740	14	1/2			UC206-18 206	PH 206	1.6								
206-19	1 3/16		90	165	121	50	21	17	18	130	38.1	15.9	22.2															
UCPH 207-20 207-21	1 1/4	35	3 9/64	6 9/16	5	2 5/8	13/16	21/32	23/32	5 1/2	1.6890	0.6890	1.0000	14	1/2			UC 207-20 207-21	PH 207	2.0								
207-22	1 5/16		95	167	127	60	21	17	18	140	42.9	17.5	25.4															
207	1 3/8		207-22																									
207-23	1 7/16		207-23																									
UCPH 208-24 208-25	1 1/2	40	3 15/16	7 1/4	5 13/32	2 1/4	13/16	21/32	25/32	5 29/32	1.9370	0.7480	1.1890	14	1/2			UC 208-24 208-25	PH 208	2.7								
208	1 9/16		100	184	137	70	21	17	20	150	49.0	19.0	30.2															
UCPH 209-26 209-27	1 5/8	45	4 9/64	7 15/32	5 3/4	2 3/4	13/16	21/32	25/32	6 7/32	1.9370	0.7480	1.1890	14	1/2			UC 209-26 209-27	PH 209	3.0								
209-28	1 11/16		105	190	146	70	21	17	20	158	49.2	19.0	30.2															
209	1 3/4		209-28 209																									
UCPH 210-30 210-31	1 7/8	50	4 21/64	8 1/8	6 1/4	2 3/4	7/8	29/32	7/8	6 1/2	2.0315	0.7480	1.2835	16	5/8			UC 210-30 210-31	PH 210	3.5								
210	1 15/16		110	206	159	70	22	20	22	165	51.6	19.0	32.6															



Bearing Number	Unit Number	Shaft Dia. d		Dimensions (mm)											Bolt Used	Housing Number	Weight kgf	
		in	mm	h	a	e	b	s (mm)	g	w	D	Bi	n	m				
UC 201	UCPA 201		12															
201-8	201-8	1/2	15															
202	UCPA 201																	
202-10	202-10	5/8		1-7/16	3	2-3/64	1-9/16	10	7/16	2-7/16	1/2	1.2205	0.5000	0.7205	10	PA 204	0.64	
203	203		17	30.2	76	52	40		11	62	13	31.0	12.7	18.3				
204-12	204-12	3/4																
204	204		20															
UC 205-14	UCPA 205-14	7/8																
205-15	205-15	15/16		1-7/16	3-5/16	2-3/64	1-9/16	10	7/16	2-7/16	1/2	1.2205	0.5000	0.7205	10	PA 205	0.83	
205	205		25	36.5	84	56	45		12	72	13	34.0		14.3	19.7			
205-16	205-16	1																
UC 206-18	UCPA 206-18	1-1/8																
206	206		30	1-11/16	3-11/16	2-19/64	1-31/32	14	19/32	3-5/16	23/32	1.5000	0.6260	0.8740	14	PA 206	1.2	
206-19	206-19	1-3/16																
UC 207-20	UCPA 207-20	1-1/4																
207-21	207-21	1-5/16		1-7/8	4-11/32	3-5/32	2-5/32	14	1/2	3-3/4	25/32	1.6890	0.6890	1.0000	14	PA 207	1.7	
207-22	207-22	1-3/8		36.5	84	56	45		12	72	13	34.0	14.3	19.7				
207	207		35															
207-23	207-23	1-7/16																
UC 208-24	UCPA 208-24	1-1/2		1-15/16	4-9/16	3-5/16	2-9/32	14	1/2	3-15/16	25/32	1.9370	0.7480	1.1890	14	PA 208	2.0	
208-25	208-25	1-9/16		49.2	116	84	58		13	100	20	49.2	19.0	30.2				
208	208		40															
UC 209-26	UCPA 209-26	1-5/8																
209-27	209-27	1-11/16		2-3/64	4-23/32	3-35/64	2-9/8	14	1/2	4-1/4	1	1.9370	0.7480	1.1890	14	PA 209	2.2	
209-28	209-28	1-3/4		49.2	116	84	58		13	100	20	49.2	19.0	30.2				
209	209		45															
UC 210-30	UCPA 210-30	1-7/8		2-1/4	5-1/8	3-45/64	2-17/32	16	9/16	4-9/16	1	2.0315	0.7480	1.2835	16	PA 210	2.8	
210-31	210-31	1-15/16		57.2	130	94	64		14	116	25	51.6	19.0	32.6				
210	210		50															

FBJ

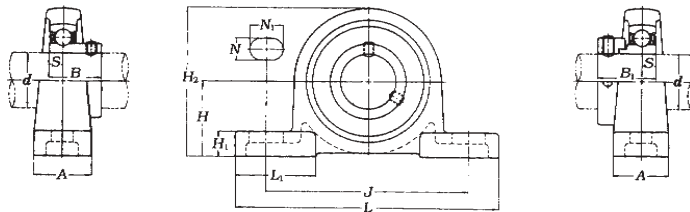
(Clean Series Flange Units) UFL 000



Unit Number	Shaft Dia. d mm	Dimensions (mm)											Bolt Size	Bearing		Housing Number	Weight kg	
		H	J	A ₂	A ₁	A	N	L	A ₀	B	S	A ₁ A ₂		Bearing Number	Capacities			
															C (kg)			Co (kg)
UFL 000	10	60	45	6	6	12	7	36	16	15	5	20.5	M6	SU 000	465	200	FL 000	65
UFL 001	12	63	48	6	6	12	7	38	16	15	5	20.5	M6	SU 001	520	245	FL 001	70
UFL 002	15	67	53	6.5	6.5	13	7	42	17.5	16.5	5.5	22	M6	SU 002	570	290	FL 002	90
UFL 003	17	71	56	7	7	14	7	46	18.5	17.5	6	23.5	M6	SU 003	610	335	FL 003	115
UFL 004	20	90	71	8	8	16	10	55	22	21	7	27	M8	SU 004	955	515	FL 004	190
UFL 005	25	95	75	8	8	16	10	60	23	22	7	28	M8	SU 005	1030	595	FL 005	220
UFL 006	30	112	85	9	9	18	13	70	26	24.5	7.5	31	M10	SU 006	1350	840	FL 006	340
UFL 008	8	48	37	4	4	8.5	4.8	27	12.5	12	3.5	-	M4	SU 08	335	140	FL 08	30

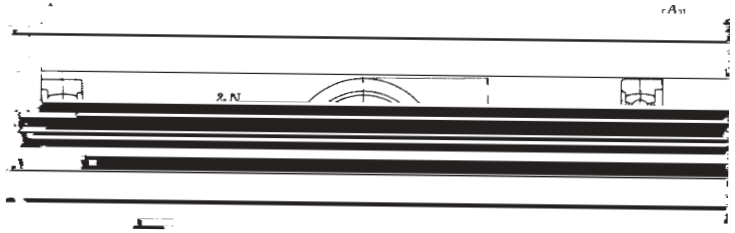
Ball Bearing Units

(Pillow Blocks Light-Duty) BLP 200 ALP 200

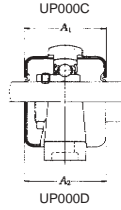
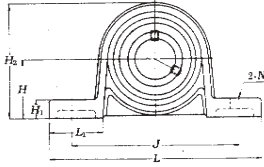
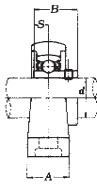


Unit Number	Shaft Dia. d mm	Dimensions (mm)											Bolt Size	Bearing			Housing Number	Weight kg
		H	L	J	A	N	N ₁	H ₁	H ₂	L ₁	S	B ₁		Bearing Number	Capacities			
		B ₂	C (kg)	Co (kg)														
BLP 201 ALP 201	12	30.2	114	87	25	11	16	12	57	35	22 28.5	6	M 10	SB 201 SA 201	975	490	LP 203	0.36 0.39
BLP 202 ALP 202	15	30.2	114	87	25	11	16	12	57	35	22 28.5	6	M 10	SB 202 SA 202	975	490	LP 203	0.36 0.39
BLP 203 ALP 203	17	30.2	114	87	25	11	16	12	57	35	22 28.5	6	M 10	SB 203 SA 203	975	490	LP 203	0.36 0.39
BLP 204 ALP 204	20	33.3	125	97	27	11	16	13	65	38	25 29.5	7	M 10	SB 204 SA 204	1310	680	LP 204	0.51 0.51
BLP 204 ALP 205	25	36.5	130	100	29	11	16	13	71	39	27 30.5	7.5	M 10	SB 205 SA 205	1430	800	LP 205	0.57 0.61
BLP 206 ALP 206	30	42.9	156	120	33	14	21	14	83	47	27 33.9	8	M 12	SB 206 SA 206	1980	1150	LP 206	0.57 0.72
BLP 207 ALP 207	35	47.6	165	127	35	14	21	16	93	50	27 30.5	8.5	M 12	SB 207 SA 207	2620	1570	LP 207	0.94 1.0
BLP 208 ALP 208	40	50.8	184	140	37	14	22	18	102	55	27 30.5	9	M12	SB 208 SA 208	2970	1820	LP 208	1.8 1.9

**(Flange Units
Light-Duty)
BLF 200
ALF 200**



Unit Number	Shaft Dia. d mm	Dimensions (mm)									Bolt Size	Bearing		Housing Number	Weight kg	
		H	J	A_2	A_1	A	N	L	B_1 B_2	S		Bearing Number	Capacities			
													C (kg)			Co (kg)
BLF 201 ALF 201	12	81	63.5	9.5	9.5	18	8	52	22 28.5	6	M 6	SB 201 SA 201	975	490	LF 203	0.25 0.28
BLF 202 ALF 202	12	81	63.5	9.5	9.5	18	8	52	22 28.5	6	M 6	SB 202 SA 202	975	490	LF 203	0.25 0.28
BLF 203 ALF 203	12	81	63.5	9.5	9.5	18	8	52	22 28.5	6	M 6	SB 203 SA 203	975	490	LF 203	0.25 0.28
BLF 204 ALF 204	20	90	71.5	11	11	20	10	60	22 28.5	7	M 8	SB 204 SA 204	1310	680	LF 204	0.33 0.33
BLF 205 ALF 205	25	95	76	11	11	20	10	64	22 28.5	7.5	M 8	SB 205 SA 205	1430	800	LF 205	0.38 0.42
BLF 206 ALF 206	30	113	90.5	12	12	22.5	12	76	22 28.5	8	M 10	SB 206 SA 206	1980	1150	LF 206	0.57 0.60
BLF 207 ALF 207	35	122	100	13	13	24	12	89	22 28.5	8.5	M 10	SB 207 SA 207	2620	1570	LF 207	0.77 0.85

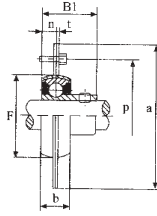


Ball Bearing Units (Clean Series Pillow Blocks) UP000

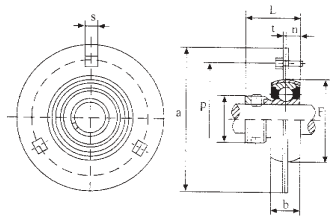
Unit Number	Shaft Dia. d (mm)	Dimensions (mm)											Bolt Size	Bearing			Housing Number	Weight (kg)	
		H	L	J	A	N	H ₁	H ₂	L ₁	B	S	A ₁		A ₂	Bearing Number	Capacities			
																C (kg)			Co (kg)
UP000	10	18	67	53	16	7	6	35	18	15	5	29	M6	SU 000	465	200	P100	70	
UP001	12	19	71	56	16	7	6	38	19	15	5	29	M6	SU 001	520	245	P001	80	
UP002	15	22	80	63	16	7	7	43	21	16.5	5.5	31	M6	SU 002	570	290	P002	120	
UP003	17	24	85	67	18	7	7	47	21	17.5	6	33	M6	SU 003	610	335	P003	140	
UP004	20	28	100	80	20	10	89	55	25	21	7	38	M8	SU 004	955	515	P004	210	
UP005	25	32	112	90	20	10	10	62	28	22	7	40	M8	SU 005	1030	595	P005	270	
UP006	30	36	132	106	26	13	11	70	34	24.5	7.5	44	M10	SU 006	1350	840	P006	410	

Pressed Flanged Circular Units SAPF / SBPF 200

SBPF200

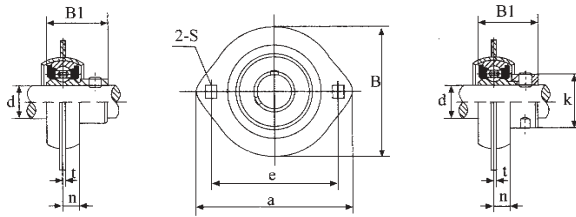


SAPF200



Bearing Number	Shaft Dia. d		Dimensions (mm)								Housing No.	Weight kg	
	in	mm	a	p	t	b	s	F	B ₁	n			
SBPF 201-8	1/2												
201-10	5/8												
201		12	81.76	63.9	2	15.88	7.14	49.2	22	6	PF 203	0.25	
202		15											
203		17											
SBPF 204-12	3/4												
204		20	91.28	71.04	2	17.07	9.13	55.6	25	7	PF 204	0.33	
SBPF 205-14	7/8												
205-15	15/16												
205-16	1		95.25	76.2	2	24.24	9.13	60.33	27	7.5	PF 205	0.38	
205	25												
SBPF 206-17	1-1/16												
206-18	1-1/8												
206-19	1-3/16		112.7	90.5	2.6	20.24	11.11	71.44	30	8	PF 206	0.6	
206-20	1-7/16	30											
206													
SBPF 207-20	1-1/4												
207-22	1-3/8		122.24	100	2.4	20.24	11.11	81	32	8.5	PF 207	0.75	
207-23	1-7/8	35											
207													

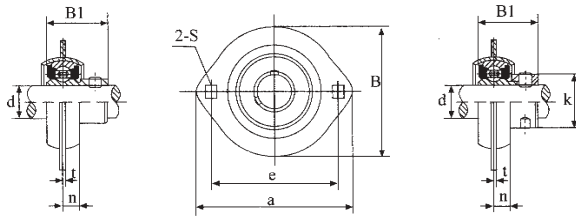
Bearing Number	Shaft Dia. d		Dimensions (mm)									Housing No.	Weight kg
	in	mm	a	p	t	b	s	F	B ₁	n	k		
SAPF 201-8	1/2												
201-10	5/8												
201		12	81.76	63.9	2	15.88	7.14	49.2	28.6	6	28.6	PF 203	0.28
202		15											
203		17											
SAPF 204-12	3/4												
204		20	91.28	71.04	2	17.07	9.13	55.6	31	7	31.75	PF 204	0.37
SAPF 205-14	7/8												
205-15	15/16												
205-16	1		95.25	76.2	2	20.24	9.13	60.33	31	7.5	38.1	PF 205	0.42
205	25												
SAPF 206-17	1-1/16												
206-18	1-1/8												
206-19	1-3/16		112.7	90.5	2.6	20.24	11.11	71.44	35.7	8	44.45	PF 206	0.65
206-20	1-7/16	30											
206	1-1/4												
SAPF 207-20	1-1/4												
207-22	1-3/8		122.24	100	2.4	20.24	11.11	81	38.9	8.5	55.6	PF 207	0.80
207-23	1-7/8	35											
207													



Pressed Oval Flange Units SAPFL / SBPFL 200

Bearing Number	Shaft Dia. d		Dimensions (mm)							Housing No.	Weight kg
	in	mm	a	e	B	t	s	B ₁	n		
SBPFL 201 201-8 202 202-10 203	1/2	12	85.73 0.25	68.26	25.4	9.13	1.59	43.66	22	6	
		22.23									
	5/8	17									
SBPFL 204-12 204	3/4	20	25.4 0.23	98.43	76.2	31.75	9.13	1.59	50	25	7
SBPFL 205-14 205 205-16	7/8	25	28.6 0.23	108	85.73	31.75	11.11	3.18	56.36	27	7.5
	1										
SBPFL 206-18 206 206-19 206-20	1 1/8	30	33.34 0.45	117.5	95.25	38.1	11.11	3.97	65.88	33	8
	1 3/16 1 1/4										
SBPFL 207-20 207-22 207-23 207	1 1/4	35	39.69 0.65	128.6	106.4	41.3	11.11	4.76	77.76	32	8.5
	1 3/8 1 7/8										

Bearing Number	Shaft Dia. d		Dimensions (mm)								Housing No.	Weight kg
	in	mm	a	e	B	t	s	B ₁	n	k		
SBPFL 201 201-8 202 202-10 203	1/2	12	85.73 0.19	68.26	25.4	9.13	1.59	43.66	22	6	28.6	PP
	5/8	17										
SBPFL 204-12 204	3/4		98.43 0.27	76.2	31.75	9.13	1.59	50	25	7	31.75	PP
SBPFL 205-14 205 205-16	7/8	25	108	85.73	31.75	11.11	3.18	56.36	27	7.5	38.1	PP
	1											
SBPFL 206-18 206 206-19 206-20	1 1/8	30	117.5 0.50	95.25	38.1	11.11	3.97	65.88	33	8	44.45	PP
	1 3/16 1 1/4											
SBPFL 207-20 207-22 207-23 207	1 1/4	35	128.6 0.65	106.4	41.3	11.11	4.76	77.76	32	8.5	55.6	PP
	1 3/8 1 7/8											



Pressed Oval Flange Units SAPFL / SBPFL 200

Bearing Number	Shaft Dia. d		Dimensions (mm)							Housing No.	Weight kg
	in	mm	a	e	B	t	s	B ₁	n		
SBPFL 201 201-8 202 202-10 203	1/2	12	85.73 0.25	68.26	25.4	9.13	1.59	43.66	22	6	
		22.23									
	5/8	17									
SBPFL 204-12 204	3/4	20	25.4 0.23	98.43	76.2	31.75	9.13	1.59	50	25	7
SBPFL 205-14 205 205-16	7/8	25	28.6 0.23	108	85.73	31.75	11.11	3.18	56.36	27	7.5
	1										
SBPFL 206-18 206 206-19 206-20	1 1/8	30	33.34 0.45	117.5	95.25	38.1	11.11	3.97	65.88	33	8
	1 3/16 1 1/4										
SBPFL 207-20 207-22 207-23 207	1 1/4	35	39.69 0.65	128.6	106.4	41.3	11.11	4.76	77.76	32	8.5
	1 3/8 1 7/8										

Bearing Number	Shaft Dia. d		Dimensions (mm)								Housing No.	Weight kg
	in	mm	a	e	B	t	s	B ₁	n	k		
SBPFL 201 201-8 202 202-10 203	1/2	12	85.73 0.19	68.26	25.4	9.13	1.59	43.66	22	6	28.6	PP
	5/8	17										
SBPFL 204-12 204	3/4		98.43 0.27	76.2	31.75	9.13	1.59	50	25	7	31.75	PP
SBPFL 205-14 205 205-16	7/8		108 0.23	85.73	31.75	11.11	3.18	56.36	27	7.5	38.1	PP
	1											
SBPFL 206-18 206 206-19 206-20	1 1/8	30	117.5 0.50	95.25	38.1	11.11	3.97	65.88	33	8	44.45	PP
	1 3/16 1 1/4											
SBPFL 207-20 207-22 207-23 207	1 1/4	35	128.6 0.65	106.4	41.3	11.11	4.76	77.76	32	8.5	55.6	PP
	1 3/8 1 7/8											